



*Speers Point soaring high, spread our wings and learn to fly.*

Find us at Bell Street, Speers Point

[www.speerspt-p.school@det.nsw.edu.au](http://www.speerspt-p.school@det.nsw.edu.au)

10th May, 2019

Principal, Chris Payne

Ph. 4958 1230 Fax. 4958 2478

## PRINCIPAL'S MESSAGE

It's been a big start to the term for Speers Point Public School. If you haven't been up to the school this week then you may not have seen some of the changes. Given the recent disruption to administration our newsletter is a bit late. The great news is that the recent admin relocation had absolutely no impact on classes or learning.

### Administration Relocation

Our Admin has successfully relocated to Paperbark classroom. This room is located in the top block (Sugarloaf), closest to Main Rd. It is the room in the far north corner, which overlooks the fixed equipment playground.

Access to the Admin is either via Main Rd, with our front gates now unlocked for easier access, or via the stairs closest to the canteen. Other staff amenities have also been located to the Sugarloaf block.

Parents who had students attending in the aftermath of the 2015 April storm may remember the time when our Admin was located upstairs and in many ways it's all very similar. Our Admin will remain in this location until the completion of the works. Our new Admin is being built off Bell St and will form the official entry into the school.

### Construction Update

Now that we have vacated the admin, hall and green shed it enables a building site to soon be established. Last week both information sheets and an information session shared the current information which included building locations and construction site. Copies of the information sheet are available outside our new admin or for download from the School Infrastructure site. The NSW School Infrastructure site is actually a good one to keep an eye on as it has semi-regular updates uploaded and you can track the progress of the project.

### Traffic Control

With the upcoming construction zone it will have an impact on traffic. We're currently working together with a number of

parties to finalise the plan. The absolute priority is **safety**. Safety for students, safety for community and safety for staff. If we have to park a little further away, if we have to drive a lap around, or we have to walk that little bit extra so be it. **Everyone deserves to come to, and leave our school safely.** We should expect nothing less!

### Mother Day Brekkie

Thank you staff (and some awesome P&C helpers) for putting on another wonderful Mother's Day Brekkie last week. Clearly our biggest brekkie yet with so many coming in to join us over a bacon and egg roll. We hope all the mums and grandmums enjoyed the brekkie and had a wonderful Mother's day.

### NAPLAN

Our Year 3 and 5 students are undertaking the NAPLAN assessment over the next two weeks. With the exception of Year 3 writing, all tests are online. We haven't made a big fuss over NAPLAN as it is just one form of assessment that demonstrates student learning and growth. Our teachers use an array of assessment methods which help determine student learning throughout the year and as such didn't want to put any sort of pressure on students. As I explained to students this week, NAPLAN doesn't determine what job you will end up having or what car you will drive, we want everyone to do their best, but your best doesn't involve stress.

### Kinder 2020

Kinder 2020 sounds like some futuristic Sci-fi TV show (there was an old cartoon called Sealab 2020 which involved an underwater city) but Kinder 2020 is fast approaching (and just fun to say). Our first information session for our 2020 student intake is Tuesday 28<sup>th</sup> May at 6pm. Spread the word!

Have a great week

Chris Payne

Principal

## IMPORTANT DATES TO REMEMBER

<b>Thursday, 28th May</b> Kinder 2020 Info Night 6pm	<b>Monday, 10th June</b> Queen's Birthday—No School	<b>Friday, 14th June</b> Sports Carnival
---	--	---

# Reminders:

**Monday, 27th May** —\$20 deposit due for Hill End Excursion (Wattle, Cedar & some students from Pine, Bluegum & Casuarina).

Total cost \$270 due Monday, 9th September.

**Friday, 21st June** —Shark and Ray Centre excursion payment \$35 and permission forms due (Bonzai & some students from Pine, Bluegum & Casuarina) Excursion will be on Friday, 28th June.

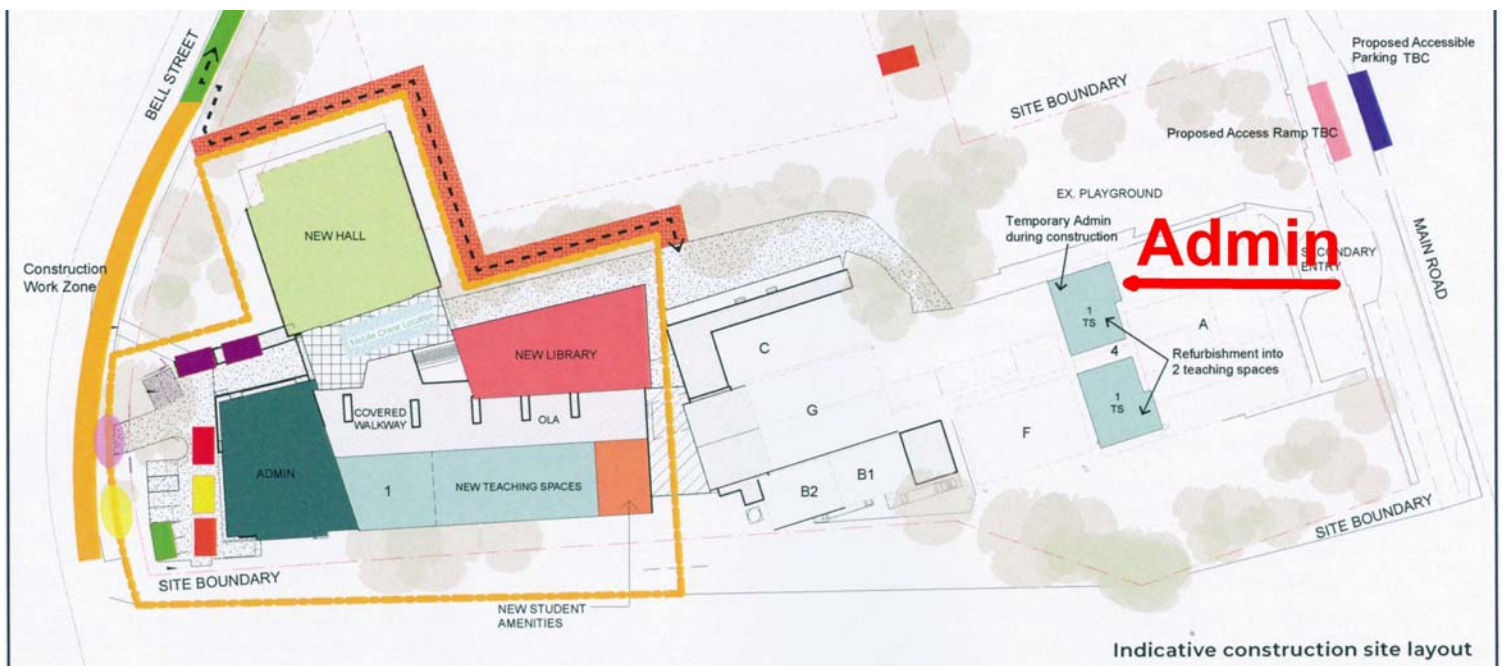
**Thursday, 27th June** —Oakvale Farm \$30 payment and permission forms DUE. (Eucalypt, Waratah & some students from Pine & Jacaranda. Excursion will be held on Thursday, 4th July.

*You are more than welcome to pay off in as many instalments as you wish. Please pay by CASH to the office or online.*

*Should you require financial assistance, please contact the school as soon as possible. Late payments will not be accepted.*

# Admin has moved!

Admin has been relocated to Paperbark room in Sugarloaf block (top block closest to Main Rd). Access is via the entry at Main Rd or the stairs up to the verandah.







# SPEERS POINT PUBLIC SCHOOL



## Hill End Excursion 18<sup>th</sup> to 20<sup>th</sup> September

Bell Street, Speers Point  
PO Box 48, Boolaroo, 2284  
Ph: 4958 1230  
Fax: 4958 2478  
[speerspt-p.school@det.nsw.edu.au](mailto:speerspt-p.school@det.nsw.edu.au)  
Principal: Christopher Payne

6/5/19

Dear Parents and Caregivers,

This is the first note about our amazing excursion to the Heritage Listed town of Hill End NSW that will be taking place towards the end of Term Three 2019.

At this stage our accommodation is locked in and our tours, activities and experiences are being finalised. A full itinerary will be sent out as soon as possible however at this stage children will be

- Going To **Scenic World** at Katoomba on the way there to go on the **Scenic Railway** and Rainforest Boardwalk
- Gold panning
- Exploring the Heritage Listed Town of **Hill End**
- Attending the **History Hill** and Town museum and Information Centre
- Visiting **Bald Hill** and **Hawkins Hill** mines including underground tours
- Participating in **Campfire singalongs** and torchlight walks.

In order to finalise plans we need to find out how many children will be attending. At this stage we are asking for the initial permission note, medical form and a \$20 deposit to be made within the next three weeks.

**As this is an excursion to be held within regular school hours with class teachers, we expect all students to attend.**

Please do not hesitate to contact myself or class teachers to discuss any concerns you may have.

<b>Date</b>	<b>Wednesday 18th of September to Friday 20th of September 2019</b>
<b>Cost</b>	<b>Deposit - \$20 by Monday 27<sup>th</sup> of May</b> <b>Total Cost - \$270 by Monday 9<sup>th</sup> September</b> You are more than welcome to pay off in as many instalments as you wish Please pay by CASH to the office or POP
<b>Classes Involved:</b>	WATTLE, CEDAR and some students from PINE, BLUEGUM and CASUARINA
<b>Meals and Information</b>	A full itinerary and requirement list will be sent out by the end of this term

Please complete the attached permission note and medical note and return it with the initial deposit of \$20 by **Monday 27th of May 2019**

- Each excursion will be adequately staffed and will not need parent volunteers at this stage.
- All excursions will be travelling by coach.

Should you require financial assistance please contact the school as soon as possible.

Thank you for your support,  
Angela Hopton (Science and History Co-ordinator)





# SPEERS POINT PUBLIC SCHOOL

## Oakvale Farm Excursion

Bell Street, Speers Point

PO Box 48, Boolaroo, 2284

Ph: 4958 1230

Fax: 4958 2478

[speerspt-p.school@det.nsw.edu.au](mailto:speerspt-p.school@det.nsw.edu.au)

Principal: Christopher Payne

6/5/19

Dear Parents and Caregivers,

Our Excursion to Oakvale farm will be held at the end of this term. Classes will be attending a one-day excursion to Oakvale Farm within normal school hours. They will be learning about animals, their habitats and their needs as a stimulus to Writing tasks in English as well as supplementing Science Outcomes.

Children will be going on a guided tour with their teachers, exploring the farm and animal's habitats and having meet and greets with many animals.



A truly memorable and valuable experience for all students!

<b>Date</b>	<b>Thursday 4<sup>th</sup> of July, Week 10, Term Two</b>
<b>Cost</b>	Total Cost - <b>\$30</b> You are more than welcome to pay off in instalments Please pay by CASH to the office or POP
<b>Classes Involved:</b>	EUCALYPT, WARATAH and some students from PINE and JACARANDA
<b>Time:</b>	9:00 till 3:00 Students should arrive and leave at regular school hours
<b>Meals and Information</b>	Fruit Break, Morning Tea and Lunch packed from home Wear: Full school uniform including hat and sunscreen

Please complete the attached permission note and medical note and return it with the required payment by

**Thursday 27<sup>th</sup> of June 2019**

- Each excursion will be adequately staffed and will not need parent volunteers at this stage.
- All excursions will be travelling by coach.

*Should you require financial assistance please contact the school.*

Thank you for your support,  
Angela Hopton (Science and History Co-ordinator)



### WITHDRAWAL FROM EXCURSION

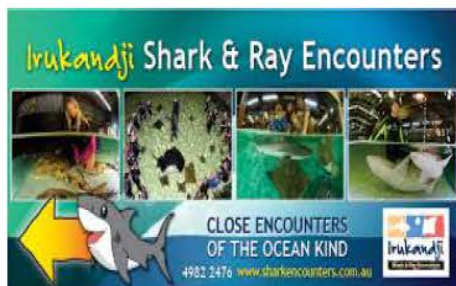
*Should a student's history of unacceptable behaviour indicate that he or she might compromise the safety or welfare of himself/herself or other students, the school reserves the right to withdraw that child from an activity or excursion. Indicators of unsuitability for inclusion on excursions or activities are a history of: violence, disobedience, non-cooperation or abuse of others.*

*According to our School Behaviour Guide; possible exclusion from excursions results from 3 or more Resolution Room days within a 3 school week period.*





# SPEERS POINT PUBLIC SCHOOL



## Irukandji Shark & Ray Centre Excursion

Bell Street, Speers Point

PO Box 48, Boolaroo, 2284

Ph: 4958 1230

Fax: 4958 2478

[speerspt-](mailto:speerspt-)

[p.school@det.nsw.edu.au](mailto:p.school@det.nsw.edu.au)

Principal: Christopher Payne

6/5/19

Dear Parents and Caregivers,

Our Excursion to Irukandji Shark & Ray Centre will be held at the end of this term within normal school hours.

They will be learning about Sharks and Rays, their habitats and their needs as a stimulus to Writing tasks in English as well as supplementing Science Outcomes.

Children will be learning about the importance of animal conservation and protection as well as having the opportunity to have a hands on feeding experience with the sea creatures.

Students will be invited to enter the waist deep pools to hand feed the creatures but they are not required to do so. Children can feed and observe from the side of the pool if they feel more comfortable. Having been to the centre with my own children in the holidays, I can assure you that it will be an experience that they will never forget.

<b>Date</b>	<b>Friday 28th of June, Week 9, Term Two</b>
<b>Cost</b>	Total Cost - <b>\$35</b> You are more than welcome to pay off in instalments Please pay by CASH to the office or POP
<b>Classes Involved:</b>	BONSAI and some students from PINE, BLUEGUM and CASUARINA
<b>Time:</b>	9:00 till 3:00 Students should arrive and leave at regular school hours
<b>Meals and Information</b>	Fruit Break, Morning Tea and Lunch packed from home Wear: Full school uniform including hat and sunscreen <i>Bring board shorts &amp; T'shirt &amp; towel (swimmers with T'shirt required) to enter pools.</i>

Please complete the attached permission note and medical note and return it with the required payment by **Friday 21<sup>st</sup> of June 2019**

- Each excursion will be adequately staffed and will not need parent volunteers at this stage.
- All excursions will be travelling by coach.

*Should you require financial assistance please contact the school.*

Thank you for your support,

Angela Hopton (Science and History Co-ordinator)

### WITHDRAWAL FROM EXCURSION

*Should a student's history of unacceptable behaviour indicate that he or she might compromise the safety or welfare of himself/herself or other students, the school reserves the right to withdraw that child from an activity or excursion. Indicators of unsuitability for inclusion on excursions or activities are a history of: violence, disobedience, non-cooperation or abuse of others.*

*According to our School Behaviour Guide; possible exclusion from excursions results from **3** or more Resolution Room days within a **3** school week period.*



Please bring in..



Plastic bottle tops



Newspaper



Magazines



# Don't forget to pack Crunch&Sip® every day...

Crunch&Sip® is a set time for your child to eat vegetables or fruit and drink water in the classroom.



Speers Point Public School is proud to be part of the Crunch and Sip initiative. Please ensure you are packing a bottle of water and **at least** one serve of fruit or vegetables each day for your child/ren to eat during the designated Crunch and Sip class time each day.

We also ask that you consider how much hard work a day at school is when packing lunchboxes. Kids need a lot of energy to get through the school day and we strongly encourage you always pack a substantial lunch meal, for example, a sandwich/bread roll/wrap, salad, pasta, as well as several healthy snacks to make sure your child/ren has enough of the right fuel to thrive throughout the day!



# Making Payments

*Just a reminder that our office does not have EFTPOS facilities. If you wish to make payment using your card, the instructions to make a payment via our school website are below. We also take cash payments. Please ensure you provide the correct money as we do not have change.*

## **Parent Online Payment Instructions**

Speers Point Public School offers online payments for parents and caregivers. Payments can be made using either a Visa or MasterCard, credit or debit card. The secure payment page, hosted by Westpac, is accessed via our website by selecting the Make a Payment link above.

You will be able to pay for anything you would normally pay at the front office.

When you access the Make a Payment you must enter:

1. the student's name
2. date of birth
3. the ref. or invoice (if applicable)
4. the payment option
5. the payment description
6. the amount you are paying.

These details need to be entered each time you make a payment as student information is not held within the payment system. No student's details are given to Westpac. As a consequence, payments for each child need to be made separately.

This is a secure payment system hosted by Westpac to ensure that your credit/debit card details are captured securely. These details are not passed back to the school.

Under payment options, enter the details provided on the permission note.

You can print your own receipts or have the receipt emailed to your email account. This gives you immediate proof that you have paid for the item. Record your receipt number on the permission note and return it to school as normal. Your payment will be reconciled against the receipt number on the permission note.

Making an online payment does not constitute permission.

Please return all signed permission notes to school as normal.



# P & C News

## CANTEEN ROSTER:

We are looking for volunteers for the remainder of this term – if you can help please let us know. The next few weeks are looking a bit drab and could certainly improve with a couple of helpers! Send a text message to 0412 980 829 or sign up at: <https://signup.com/go/vykfYfM>

Date	No of Volunteers Needed
Friday, 10 May 2019	1 Volunteer
Wednesday, 15 May 2019	1 Volunteer
Friday, 24 May 2019	1 Volunteer
Wednesday, 29 May 2019	1 Volunteer
Friday, 31 May 2019	1 Volunteer
Friday, 7 June 2019	2 Volunteers

Without helpers, the canteen will be closed as it was last Friday. We want to try and avoid this, but volunteers will be needed to remain open.

## CODING PROGRAM:

Our coding program is full steam ahead for the term which is fantastic news for SPPS! There are still spots available though so if you would like your child to attend please contact the guys at Broader Learning – their website has all the details. [www.broaderlearning.com.au](http://www.broaderlearning.com.au) The course is held on Thursday mornings from 7.45am – 8.45am.

## FEDERAL ELECTION BBQ:

Greg Tredinnick, Rob Taylor, Dan Corp and Kat McLardy will be running an election BBQ at Speers Point Council on Saturday, 18 May as a fundraising effort for the school. It would be great to have one or two more helpers for just a couple of hours where you can. Otherwise it does make for a really long day for those couple of parents who are always assisting. If you can help please let us know as that will determine us going ahead with the BBQ. You can send a message to 0412 980 829 or sign up at: <https://signup.com/go/DybueMB>

## SPEERS POINT PUBLIC SCHOOL FAMILY NIGHT OUT

Join us at the release of the new Toy Story Movie!

SPPS will be hosting a movie night at Event Cinemas Glendale with all fundraising efforts going directly back into learning resources for the kids!

All tickets are \$10 each (+ ticket fee, per group purchase)



Saturday, 22 June 2019  
6pm for 6.30pm screening  
Event Cinemas, Glendale

Purchase your tickets at:  
<https://www.stickytickets.com.au/86460>



# Speers Point Public School

## Canteen Menu

2019

### Lunch Meal Deals

Everyday Food (Healthy Option)		Occasional Food (Select carefully)	
Toasted Ham & Cheese Sandwich & Drink	\$4.50	4 x Chicken Nuggets & Drink	\$4.00
		6 x Chicken Nuggets & Drink	\$5.00
Toasted Chicken & Cheese Sandwich & Drink	\$4.50	Chicken Burger & Drink	\$6.50
Cheese Burger (lean meat) & Drink	\$6.00	Pie & Drink	\$5.00
Chicken Burger (lean chicken) & Drink	\$6.00	Sausage Roll & Drink	\$4.00

### Hot Food

Toasted Ham & Cheese Sandwich	\$3.00	Chicken Burger (crumbed chicken breast, lettuce, mayo & cheese)	\$4.50
Toasted Chicken & Cheese Sandwich	\$3.00	Sausage Roll	\$1.80
Cheese Burger (lean meat)	\$4.50	Warm Beef Noodles	\$1.50
Chicken Burger (lean chicken)	\$4.50		
Spaghetti	\$4.00		
Macaroni	\$4.00		
Fried Rice	\$4.00	Sauce - Tomato & BBQ	30c

### Salads, Sandwiches & Wraps - All meet everyday option

(all options below available in rolls or toasted - extra 50c)

Cheese & Tomato Sandwich	\$2.50	Vegemite Sandwich	\$1.50
Chicken or Ham & Salad Sandwich	\$4.00	Ham Sandwich	\$2.70
Plain Salad Sandwich	\$2.70	Ham Salad Plate	\$4.00
Salad Plate	\$2.50	Chicken Salad Plate	\$4.00

(all cheese is reduced fat and everyday foods will contain lean meat)

### Drinks

Chocolate Milk (light)	\$2.00	Juice Poppers (Apple, Orange or Apple/Blackcurrant)	\$1.50
Strawberry Milk (light)	\$2.00		
Water 600ml	\$1.00	Chill J	\$2.00
Milo served Warm or Cold	\$2.00		

### Snacks/Recess

Carrot Sticks & Dip	\$1.50	Honey Soy Chips - small	\$1.00
Seasonal Fruit / Fresh Fruit Cup	\$1.00	Grain Waves	\$1.00
Pikelets (x 2)	40c	Chocolate Muffin	\$1.80
Popcorn	50c	Banana Bread	\$1.80
Rice Crackers	70c		

### Frozen Snacks

Quelch Fruit Tubes	50c	Moosies	70c
--------------------	-----	---------	-----

The Canteen is open on Wednesdays and Fridays

Open during Lunch only, Recess available by pre-order only

# Community News

Fire & Rescue NSW (FRNSW) will hold its annual Open Day on Saturday 18 May 2019 with fire stations across the State giving visitors a personal glimpse into Australia's busiest fire and rescue service.

More than 80,000 people will attend Open Day at their local fire station.

Open Day includes safety demonstrations, fire station tours and the chance to inspect firefighting equipment and trucks used by our firefighters when responding to fires and other emergencies. There is also an array of activities for kids.

Visitors can also speak to firefighters first-hand about fire safety in the home, including how to install and maintain smoke alarms and how to develop a home escape plan to ensure they can quickly and safely escape a fire.

For more information, contact Cardiff Fire Station on (02) 4954 9111.

Please also note that if you get to Cardiff Fire Station and it is closed, we may be responding to an emergency.



**CARDIFF  
FIRE STATION  
IS OPENING UP!**

**WE'D LOVE FOR  
YOU TO JOIN US**

**OPEN DAY  
2019**

FROM 10AM - 2PM  
SAT 18TH MAY